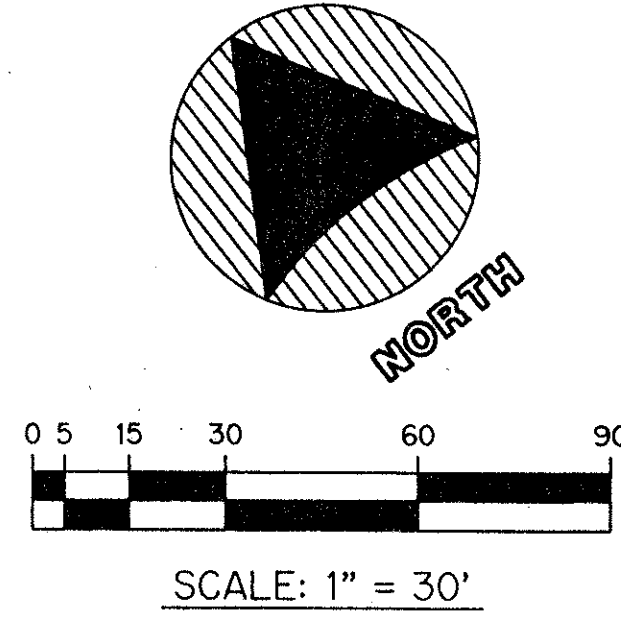
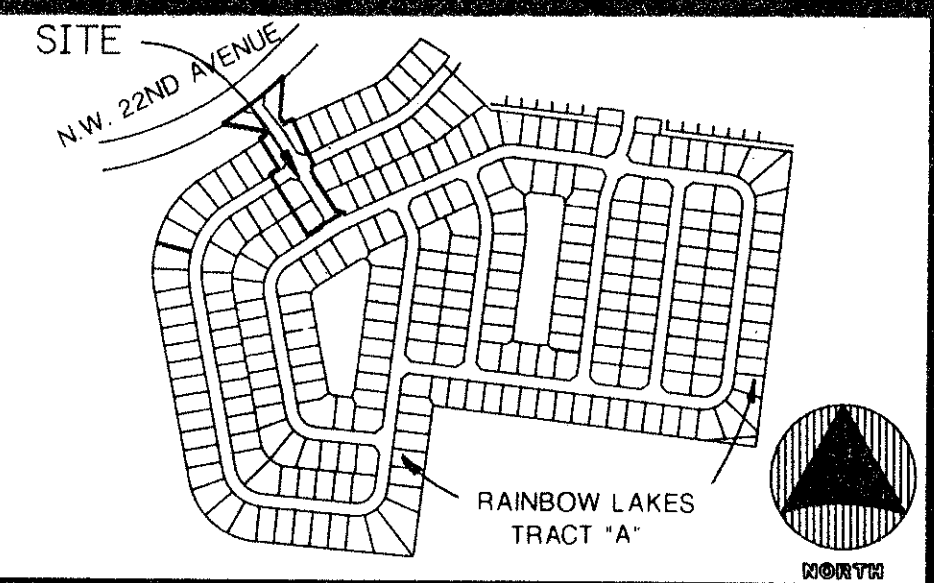


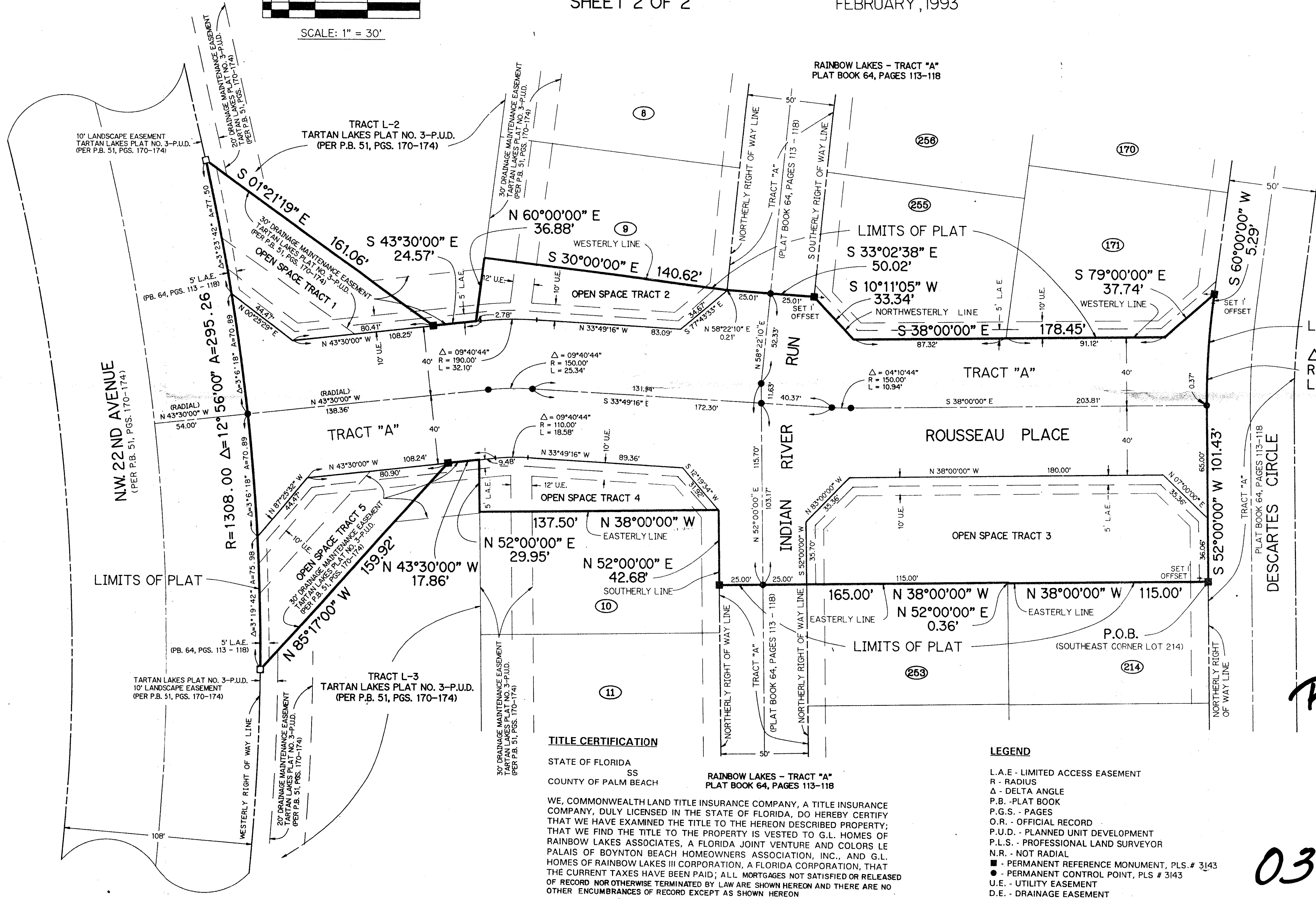
# TRACT A - ROADWAY PLAT

BEING A REPLAT OF LOTS 213 AND 254 AND TRACTS A, OS-1 AND OS-2 OF RAINBOW LAKES - TRACT "A" AS RECORDED IN PLAT BOOK 64, PAGES 113 THROUGH 118 INCLUSIVE OF THE PUBLIC RECORDS OF PALM BEACH COUNTY, FLORIDA.

SECTION 14, TOWNSHIP 45 SOUTH, RANGE 42 EAST  
SHEET 2 OF 2  
FEBRUARY, 1993



LOCATION MAP  
N.T.S.



LIMITS OF PLAT  
 $\Delta = 08^{\circ}00'00''$   
 $R = 425.00'$   
 $L = 59.34'$

### TITLE CERTIFICATION

STATE OF FLORIDA  
SS  
COUNTY OF PALM BEACH  
WE, COMMONWEALTH LAND TITLE INSURANCE COMPANY, A TITLE INSURANCE COMPANY, DULY LICENSED IN THE STATE OF FLORIDA, DO HEREBY CERTIFY THAT WE HAVE EXAMINED THE TITLE TO THE HEREON DESCRIBED PROPERTY; THAT WE FIND THE TITLE TO THE PROPERTY IS VESTED TO G.L. HOMES OF RAINBOW LAKES ASSOCIATES, A FLORIDA JOINT VENTURE AND COLORS LE PALAIS OF BOYNTON BEACH HOMEOWNERS ASSOCIATION, INC., AND G.L. HOMES OF RAINBOW LAKES III CORPORATION, A FLORIDA CORPORATION, THAT THE CURRENT TAXES HAVE BEEN PAID; ALL MORTGAGES NOT SATISFIED OR RELEASED OF RECORD NOR OTHERWISE TERMINATED BY LAW ARE SHOWN HEREON AND THERE ARE NO OTHER ENCUMBRANCES OF RECORD EXCEPT AS SHOWN HEREON

### LEGEND

- L.A.E. - LIMITED ACCESS EASEMENT
- R - RADIUS
- $\Delta$  - DELTA ANGLE
- P.B. - PLAT BOOK
- P.G.S. - PAGES
- O.R. - OFFICIAL RECORD
- P.U.D. - PLANNED UNIT DEVELOPMENT
- P.L.S. - PROFESSIONAL LAND SURVEYOR
- N.R. - NOT RADIAL
- - PERMANENT REFERENCE MONUMENT, PLS. # 3143
- - PERMANENT CONTROL POINT, PLS. # 3143
- U.E. - UTILITY EASEMENT
- D.E. - DRAINAGE EASEMENT
- FPL - FLORIDA POWER AND LIGHT COMPANY
- OS - OPEN SPACE

DATE: 4-19-93

RAINBOW LAKES - TRACT "A"  
PLAT BOOK 64, PAGES 113-118

COMMONWEALTH LAND TITLE INSURANCE COMPANY  
RAINBOW LAKES TRACT A ROADWAY PLAT

PET. 79-177C  
ALLOC. #0001

0316-013

70/181

BOOK 181  
PAGE 181  
FLOOD ZONE 13  
QUAD #24  
SE # 79-177  
PUD NAME RAINBOW LAKES

TAZ = 44